

PHILADELPHIA PREMIERE

theatre exile



A CASE FOR THE EXISTENCE OF GOD

by **SAMUEL D. HUNTER**

Directed by **MATT PFEIFFER**

HONORARY PRODUCERS **JONI MARCUS & EDDIE GREVES**

ASSOCIATE PRODUCERS **GAYLE & DAVID SMITH** and **THE BROTHERS' NETWORK**

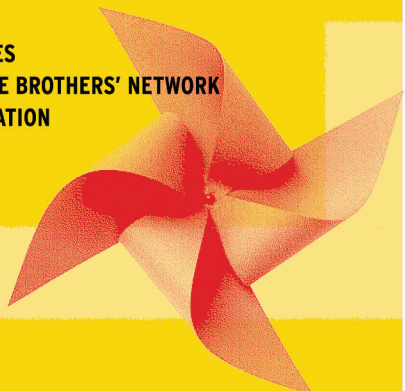
ADDITIONAL SUPPORT **DOLFINGER-McMAHON FOUNDATION**



**TheBrothers'
Network**
#BlackBeyondBoundaries

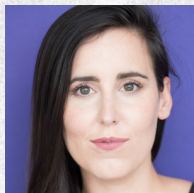
**DOLFINGER-McMAHON
FOUNDATION**

JANUARY 4 - JANUARY 21, 2024



STUDIO X-HIBITION

THREE READINGS OF THREE NEW PLAYS OF THREE EXCITING STORIES
BY THREE LOCAL PLAYWRIGHTS



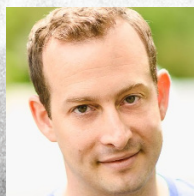
Nose Job Jan 8, 2024 at 7pm

Written by **LEE MINORA**
and **SCOTT R. SHEPPARD**

Directed and Developed by Nell Bang-Jensen.

Developed with Matteo Scammell

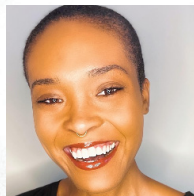
Charting twelve centuries of consent and power, *Nosejob* looks at the current state of American sexual politics by revisiting heroines from a barbarous past. Inspired by the story of Saint Aebbe of 9th century Scotland, who supposedly cut off her nose so that she would not be raped by invading vikings.



Nightbird March 18, 2024 at 7pm

Written by **R. Eric Thomas**

What goes in the place of a Confederate monument in a Black Baltimore neighborhood? This is a play about liminal spaces, about the in-between, the tenuous, the fragile and the things on the cusp of exploding. Will a reckoning come? And after that, well, what then?



Masc June 10, 2024 at 7pm

Written by **Angela/Rayne Bey**

Tasha is a woman who does not exist. That's because Tasha is Rayne- a man. Rayne is not an uppity Black woman, not a first-gen college coaster, not a self-loathing hedonist with a death wish, not what everyone thinks. Rayne masks well...until his estranged father Tony comes home on "compassionate release." Now, the jury's out on whether Tony or Rayne will make it to graduation. MASC. is a dark-comedy about identity. What parts of ourselves do we owe the ones we love?

PAY WHAT YOU CAN



A CASE FOR THE EXISTENCE OF GOD

By **SAMUEL D. HUNTER**

Directed by **MATT PFEIFFER**

JANUARY 4 - JANUARY 21, 2024

HONORARY PRODUCERS **JONI MARCUS & EDDIE GREVES**
ASSOCIATE PRODUCERS **THE BROTHERS' NETWORK** and **GAYLE & DAVID SMITH**
ADDITIONAL SUPPORT **DOLFINGER-McMAHON FOUNDATION**

CAST

Ryan..... Keith Conallen*

Keith Isaiah Caleb Stanley

SETTING

Twin Falls, Idaho

CREW

Director

Matt Pfeiffer

Set & Lighting Designer

Thom Weaver

Props Designer

Emily Schuman

Production Manager

Gabby Goldman

Board Op

Casie Weaver

Costume Designer

Leigh Paradise

Master Electrician

Nick Wacksman

Stage Manager

Melody Wong*

Set Built by

Scott Cassidy

Matt Faragasso

Sound Design & Original Music

Michael Kiley+

Audio Engineer

Natali Merrill

ASM

Miranda Watkins

Scenic Charge

Sarah Schunke



* Member of Actors' Equity Association,
the Union of Professional Actors and Stage Managers
in the United States

+



UNITED
SCENIC
ARTISTS

NOTE FROM DEBORAH

I love Samuel D. Hunter's work. In our 2014-15 season we produced his play *The Whale* directed by Matt Pfeiffer with Set and Light Design by Thom Weaver. I'm so happy that they are both back with a terrific team to bring this play to life. *The Whale* was a hit for Exile, earning us four Barrymore Awards including Outstanding Overall Production and Direction of a Play. It took us years to get the rights to produce that show and the same thing happened with *A Case for the Existence of God*. It was worth the wait. In a time when it feels like all people are distilled down to their last post on Social Media and when masculinity is almost only said with the word toxic, Hunter allows us to view the world in a more nuanced and understanding way. He carefully takes us through a particularly difficult time in two men's lives. We see their vulnerability as they try to be good fathers and good friends. While one of the binding traits among these two is a certain type of sadness, Hunter gives us hope for the future and even presents a case for the existence of God. A difficult trick in this time of turmoil.

Thank you for joining us as we all emerge from Exile.



Deborah Block, Producing Artistic Director
January 2024

THEATRE EXILE'S 2023-2024 SEASON IS BROUGHT TO YOU BY

THE SHUBERT
FOUNDATION INC.

Independence
foundation

WILLIAM PENN
FOUNDATION



Wyncote
Foundation

THE
Christopher
Ludwick
FOUNDATION

CHARLOTTE CUSHMAN
FOUNDATION



The Philadelphia
Cultural Fund

Suzanne Roberts Cultural
Development Fund

pennsylvania
COUNCIL ON THE ARTS
Building stronger communities takes creativity

NATIONAL
ENDOWMENT for the ARTS
arts.gov

DOLFINGER-MCMAHON
FOUNDATION

TheBrothers'
Network
#BlockBeyondBoundaries

CAST & CREW



Keith J Conallen (Ryan) is an East Passyunk Xing resident, thrilled to be back at Exile after last year's *Wolf Play* (nominated for Best Ensemble at the 2023 Barrymore Awards). REGIONAL: Wilma Theater Co. (*Twelfth Night*, *R&G Are Dead*, *Don Juan Comes Home From Iraq*, etc.), Theatre Exile (*Wolf Play*, *Red Speedo*, *Gruesome Playground Injuries*, etc.), Arden Theater Co. (*Funnyman*, *72 Seconds to Judgment*), Azuka Theatre (*Lights Rise On Grace*, *Kid Simple*, etc.), Die-Cast (*Pericles*, *Menagerie of Angels*, etc.), among others. Keith is a proud member of the Wilma Hothouse Company. Instagram: @reverend_keith Venmo: @Keith-Conallen . Eternal gratitude to Deb, Matt, Isaiah, Melody, the crew, designers, admin team, donors, board, family and friends. Be kind.



Isaiah Caleb Stanley (Keith) (he/him) is an actor based in Brooklyn, NY. Most recent credits include Pennsylvania Shakespeare Festival's *Romeo and Juliet*, as well as the New York premiere of *Parable of the Sower* the Opera at Lincoln Center. Big thanks and bigger love to mom + dad, family + friends, and this wonderful team. Thank you for being here.
@isaiahstanley

Matt Pfeiffer (Director) (he/him) Matt is a long time resident artist here at Theatre Exile, having directed and/or acted in over 20 productions. Other credits include Arden Theatre, People's Light & Theatre, Lantern Theatre, 1812 Productions, Interact, Delaware Theatre Co, Theatre Horizon, Walnut St Theatre, Bristol Riverside, and 24 seasons with the Pennsylvania Shakespeare Festival, among others. Matt is a 12 time Barrymore nominee and winner for best Director for *The Whale* and *The Invisible Hand* both with Theatre Exile. He's also the recipient of the F. Otto Haas Award. This production is dedicated to Annie and John. I love being your dad and I try to earn it every day.

Thom Weaver (Scenic and Lighting Designer) (he/him) His work has been seen at NYSF/ Public Theatre, Roundabout Theatre, Primary Stages, Signature Theatre (NY), Pilobolus, The Barbican, Arden, Wilma, PTC, Lantern, New Paradise Laboratories, CenterStage, Alliance, Huntington Theatre, Chicago Shakespeare, Syracuse Stage, Milwaukee Rep, Shakespeare Theatre, Asolo, Berkshire Theatre Festival, Williamstown, Folger Theatre, Cleveland Playhouse, Roundhouse Theatre, Cincinnati Playhouse, Hangar, Spoleto Festival, City Theatre, Pittsburgh Public Theatre, and Yale Rep among others. 6 Barrymore Awards, 2 Jeff Awards, 2 AUDELCO Awards, and the Helen Hayes Award. Program director for Theater Design and Technology at UArts. Co-Founder of Die-Cast with Brenna Geffers and a member of Wingspace. Education: Carnegie-Mellon and Yale. Black Lives Matter.

CAST & CREW

Leigh Paradise (Costume Design) (she/her) is a costumer and custom clothier based in southeastern PA. Her design credits include *This is the Week That Is* (1812 Productions), *Crumbs from the Table of Joy* (Lantern Theater Company), *Intimate Apparel* (Desales University, Act 1), *Sense and Sensibility* (Pennsylvania Shakespeare Festival), *The Importance of Being Earnest* (DeSales University, Act 1), *Last of the Red Hot Lovers* (Walnut Street Theater), *Town* (Theatre Horizon), and *Bayard Rustin: Inside Ashland* (People's Light). She would like to thank Matt Pfeiffer and Theatre Exile for inviting her to join this production, and her family for their endless patience and support.

Michael Kiley (Sound Design and Original Music) (he/him). Off Broadway: Playwrights Horizons (*School Pictures*). Regional: The Wilma Theatre (*Mr. Burns - A Post Electric Play*, *Minor Character*, *Twelfth Night*), Woolly Mammoth (*My Mama and the Full-Scale Invasion*), The Play Company (*Ludic Proxy*), The Acting Company (*As You Like It*, *Hamlet*, *R&G are Dead*), Indiana Repertory Theatre (*Flyin' West*). Dance: Faye Driscoll (*Thank You for Coming: Attendance*), Nichole Canuso Dance Company (*The Garden*). Original Work: *Close Music for Bodies* (FringeArts), *As the Eyes of the Seahorse* (HERE Arts Center), *GPS triggered soundwalks* (The Empty Air, Animina, Gridstone Devotional, and Trail Off). www.michaelkiley.com www.themuralandthemint.com

Emily Schuman (Props Designer) (she/her) is a Philadelphia-based props designer, actor and musician. Her prop and object design work has been seen at such companies as Nichole Canuso Dance Company, InterAct Theatre Company, 1812 Productions, Applied Mechanics, Orbiter 3, and Theatre Horizon. This is her second Theatre Exile production and she is thrilled to be working with such amazing artists. Love to Evan and the kitties. EmilySchuman.net

Gabby Goldman (Production Manager) (she/they) is an PHL/NYC based production manager and prop designer. This is their first season with Theatre Exile! Recent credits include *Mary Gets Hers* (prop design) at Playwrights Realm; *The Trees and Regretfully, So the Birds Are* (asst. Prop supervisor) at Playwrights Horizons; *What the Constitution Means To Me* (Weston Theater Company) as the Assistant Props Supervisor. They hold a BFA from Montclair State University

Melody Wong (Stage Manager) (she/her) is thrilled for her 2nd season at Theatre Exile. Credits include, *Abandon*, *The Light*, *Wolfplay* at Theater Exile, *American Fast* with InterAct, *Dreamgirls* with Theater in the X, *In Search of the Kitchen Gods* with 1812 Productions, *Group!*, *Janet Wide Awake* and *Ok Trenton* with Passage Theatre. Additional credits: SM for; *Publik Private* with Playpenn, *TURN! Polly Mope*, *Lashed but not Leashed*, *Black Light*, *The Outer Space*, *The Kinetic Tree*, PIFA 2016 at the Kimmel Center for the Performing Arts,

CAST & CREW

Melody Wong contd. *Minorityland* with PowerStreet Theater, *The Wiz* with Theater in the X, *Tiger Style* with Philadelphia Asian Performing Artists, *Master Harold and the Boys*, with EgoPo Classic Theater, Barrymore Awards 2018/2019, ASM *Whitman! Contradict this!* with Bearded Ladies Cabaret, Assistant to the Director for the live capture of *La Traviata*, *Turandot*, *The Marriage of Figaro* with Opera Philadelphia. Assistant Director on *Di Hati- Ku* with Modero Dance Co. at Fleisher Art Memorial. Lion dance consultant/ guest speaker *King of the Yeas* at Princeton University.

Miranda Watkins (Assistant Stage Manager) (they/them) is thrilled to be back with Theatre Exile! Their recent stage managing credits include *Zooman and the Sign* with Theatre in the X, *The Rape of Lucertia* with Temple University Opera Theater and *Galilee* with Azuka Theatre. Miranda is currently pursuing a BFA in Technical Production and Management at Temple University.

Natali Merrill (Audio Engineer) (she/her) is a sound and technology designer and engineer excited to return to Theatre Exile! Based in Philadelphia, she has been the sound designer for productions including *Broads* (1812 Productions), *Spring Awakening* (Bryn Mawr College),



**LET YOUR
WORDS
SOAR!**

**PAPER WINGS
SPRING BREAK
THEATRE CAMP
MARCH 25-29, 2024**



CAST & CREW

Natali Merrill contd. *High Noon* (Ninth Planet), *Shakespeare's R&J* (New Light Theatre Company), *Fucking A* (Swarthmore College), *Riot Antigone* and *Cabaret* (Haverford and Bryn Mawr Colleges). She has worked with Theatre Exile, 11th Hour Theatre Company, the Bearded Ladies Cabaret, New Century Theatre Company in Seattle, and the Williamstown Theatre Festival. A graduate of Haverford College with a major in physics, she researched and wrote a thesis on acoustics in performance halls with RWTH Aachen University in Aachen, Germany. She is also a singer and composer. www.nmerrill.com

Nick (Squeaks) Wacksman (Master Electrician) (he/him) is excited to take part in his first production at Theater Exile! As a current student at Temple University, Nick is studying lighting design, projection design, and electrics under the 'Design and Production' concentration. Nick has had the pleasure of working for companies such as The Arden, Inter-Act Theater Company, Azuka Theater, Lantern Theater Company, Delaware Theater Company, Rutgers Camden, Resident Ensemble Players, and Upper Darby Summer Stage. Lastly, Nick would like to thank his mentor, Shon Causer, for his valuable lessons and guidance.

Samuel D. Hunter (Playwright) grew up in Moscow, Idaho and lives in New York City. He is the recipient of a 2014 MacArthur "Genius Grant" Fellowship for his work as a playwright. His full-length plays include *The Whale* (Drama Desk Award, Lucille Lortel Award for Outstanding Play, GLAAD Media Award, Drama League and Outer Critics Circle nominations for Best Play), *A Case for the Existence of God* (New York Drama Critics' Circle Award for Best Play), *A Bright New Boise* (Obie Award, Drama Desk nomination for Best Play), *Greater Clements* (Drama Desk nomination for Best Play, Outer Critics Circle Honoree), *Lewiston/Clarkston* (Drama Desk nomination for Best Play), *The Few, A Great Wilderness, Rest, Pocatello, The Healing and The Harvest*, among others. A film version of *The Whale*, directed by Darren Aronofsky and starring Brendan Fraser, is set to be released by A24 Films. He is the recipient of a 2012 Whiting Writers Award and an honorary doctorate from the University of Idaho. His work has been produced off-Broadway in New York City by Lincoln Center Theatre, Playwrights Horizons, LCT3, Signature Theatre, Page 73 Productions, Clubbed Thumb and Rattlestick Playwrights Theatre. Elsewhere, his work has been produced by Theatre Royal Bath, Dallas Theatre Center, Seattle Rep, Denver Center for the Performing Arts, Woolly Mammoth Theatre Company, South Coast Rep, and Victory Gardens, among others. Two published anthologies of his work are available from TCG Books, and a third is forthcoming. He is a member of New Dramatists and a current Resident Playwright at the Signature Theatre in New York City. He holds degrees in playwriting from NYU, The Iowa Playwrights Workshop, and Juilliard.

Theatre Exile is dedicated to enhancing the cultural experiences of Philadelphians and committed to creating community by sparking dialogue through the development and staging

CAST & CREW



WIN A FABULOUS TRIP TO LOS ANGELES FOR 2!

Prize package includes airline tickets, hotel, and entertainment, valued at \$2,900.

TICKETS ARE \$100/EACH AND ONLY 100 TICKETS WILL BE SOLD.
Tickets on sale through February 29, 2024



Theatre Exile contd. of artistically excellent and provocative contemporary plays that engage the imagination. Founded in 1996 by Joe Canuso and Trish Kelly, Theatre Exile was created by a group of artists who wanted to rattle the gates of the mainstream. In July, 2013 Deborah Block took on the role of Producing Artistic Director. Under her leadership, Exile continues to produce plays that explore the complexities of the human condition packed with Philadelphia grit and passion. Exile is the first Philadelphia organization to produce such powerhouse playwrights as Tracy Letts, Lucas Hnath, Annie Baker, Rajiv Joseph, Rona Munro, and Hansol Jung among others. In 2016 Exile was named most fearless theatre by Philly Currents and Best Theater Company by Philadelphia Magazine. Exile received the Time Out Recommended Award 2017. For excellence in producing theatre, Exile has received 92 Barrymore nominations, with 19 awards. In 2017 Theatre Exile left their home to begin a new phase in Exile's life. Following her idea to create a new home in their old location in South Philadelphia, Deborah with the Board of Directors collaborated with Center City Development and Cecil Baker + Partners, and created a vision for a new theater that honors the art and maintains Exile's goals of working in an intimate and flexible environment. They moved into the new facility and produced their first play in 2019. In 2022 Theatre Exile won Best of Philly for Best Theatre Subscription and Best Local Theater Company by Metro Philly.

CAST & CREW

Actors' Equity Association (AEA) was founded in 1913 as the first of the American actor unions. Equity's mission is to advance, promote and foster the art of live theatre as an essential component of our society. Today, Equity represents more than 40,000 actors, singers, dancers, and stage managers working in hundreds of theaters across the United States. Equity members are dedicated to working in theatre as a profession, upholding the highest artistic standards. Equity negotiates wages and working conditions and provides a wide range of benefits including health and pension plans for its members. Through its agreement with Equity, this theatre has committed to the fair treatment of actors and stage managers employed in this production. AEA is a member of the AFL-CIO and is affiliated with FIA, an international organization of performing arts unions. For more information, visit www.actorsequity.org.

CHECK OUT PHOTOS FROM OUR
23-24 SEASON INCLUDING OUR FIRST
CAMP COOKIE



CAMP COOKIE

A THEATRE EXILE SPEAKEASY EVENT
THE SECOND INSTALLMENT OF
CAMP COOKIE

FEATURING COOKIE DIORIO
AND FRIENDS
FRIDAY, FEBRUARY 10



VISIT WWW.THEATREXILE.ORG FOR THE LATEST INFORMATION





Eyecare

**&
Eyewear**

Extraordinaire.

modern eye

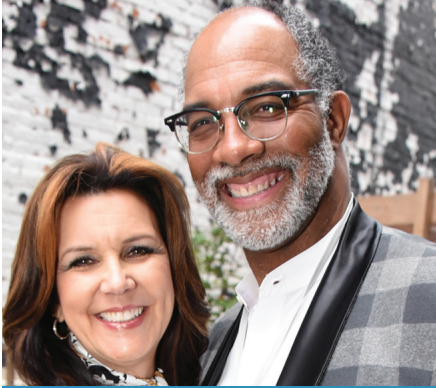
Center City

*145 South 13th Street
(NE corner 13th & Walnut)
215 922-3300*

University City

*3419 Walnut Street
The Shops at Penn
215 386-5953*

www.modern-eye.com



JOIN OUR SOCIETY OF EXILES

SUPPORTERS

We would like to give an extra special thanks to the foundations, corporations and individuals whose generosity supports our work. (This list includes gifts received from July 1, 2022 - December 21, 2023)

Foundations

America Online Giving Foundation
America's Charities
Anonymous Fund
Anton Charitable Trust
Bridge Program: National New Play Network
BGIZ Foundation
Charlotte Cushman Foundation
GlaxoSmithKline Foundation
Independence Foundation
The Lida Foundation
Charles Ludwick Foundation
Philadelphia Foundation
Suzanne Roberts Cultural Development Fund
Mortin E. and Jennie S. Rotman Fund
The Scholler Foundation
The Shubert Foundation
Victory Foundation
William Penn Foundation
Wolfson Family Foundation
Wyncote Foundation

Business

Brandywine Realty Trust
En Route Marketing
Quaker Printing Group
Ruba Club Studios

Government

Commonwealth of Pennsylvania
The Philadelphia Cultural Fund
National Endowment for the Arts

Society of Exiles

Dirk L. Allen & Glenn Sykes
Sarah Anton

Society of Exiles contd.

Deborah Block & Doug Smullens
Louis Bluver
Jennifer & David Cardy
Kathyanne Cohen & Adam Schless
Fern & John Culhane
Elizabeth Daniels Anton
Robert M. Dever
Tobey & Mark Dichter
Anna Maria & Rich Di Dio
Michael Donahue & Alex Moede
Alison Ezell
Patricia Forcina
Bill Gehrman & Christopher Mullins, Jr.
Linda & David Glickstein
Barbara & Steve Gold
Gene Gualtieri & Mary McManus
Margaret Harris & Phil Straus
Susan & Edward Hoffman
Sarah Hoskins
Dr. Jeffrey Sorkin
Frances Visco
Gregory Walker
Annabelle Jellinek
Sterling & Deena Johnson
Paul E. Kelly Foundation
Robin Sakina & Saifuddin Mama
Brett Mapp & Morgan Hugo
Joni Marcus & Eddie Greves
Elisabeth & Russ LaMotte
Nikki Marx
Tiffany Naiman
Fran & Kathy Murphy

**MAKE A DONATION OF
\$1,000 OR MORE TO
BECOME A MEMBER.**

SOCIETY OF EXILES receive:
Invitations to:
Opening Night
Exclusive VIP events
First rehearsal for our season shows
Behind the scenes access
Contact Denise Cavaliere for more
information denise@theatrexile.org

SUPPORTERS

Society of Exiles, contd.

Desiree Salera & Eric Okdeh
Lynn Marks & Clifford Pearlman
Christine Frost Red & Michael Wax
Susan Rock & Michael Phillips
Marj Rosenblum
Andrew & Bryna Scott
Gayle & David Smith
Reuben Wade & Janice Smith
SaraKay & Stanton Smullens
Rachel & Joe Stern
Debra and Bill Stewart
Jerry & Jackie Sweeney
June & Steve Wolfson
Bruce Zallie

\$500-\$999

Anonymous
John Burmaster
Liza Herzog & Paul Curci
Diane Dalto & Richard Woosnam
Erica & Matt Ezold
Christopher Anastasiou & Mitch Gillette
Beth Medoway Kagan & David Kagan
Sam & Connie Katz
Anthony Lewis
Greg Lukianoff & Michele LaBlanc
John Mackin and Danny Burke
Pam & Gresham Riley
William & Darlene Smith
Barbara & James Sterchele
In Memory of Gene Bishop
David Cramer & Christina Wiita

\$100-\$499

Anonymous
Kim & David Adler

\$100-\$499 contd.

Sarah Amon
Georgia & Barrie Ashby
Nancy Bastian
Mark Belding
Jay & Nancy Berkowitz
Barbara Block
Bob Bowersox
Jean Brody
Jay Bruff
Matt Bulfair
Marian & John Bumbaca
Richard Buxton
Paul Carlson
Beth Cohen
Heather Coyne
Emily Darigan
Cordelia Delson
Nancy DeLucia
Bonny Hohenberger
Eileen O'Brien & Samuel Hopkins
Esther & Robert Hornik
Caren Hosansky
Miriam Indenbaum
Judy Adamson & Fred Jackes
Randall Johnston
Judy Kaplow
Nancy Boykin
Ken Kesslin
Marta & Bill Kiesling
Rachel Kleinman
Valerie Koscelnik
Carolyn Schlecker & Bob Kosseff
Myra Kranzel
Allen J. Kuharski
Melanie Kzirian

SUPPORTERS

\$100-\$499 contd.

Marilyn Lammert
Eva & Michael Leeds
Natalie Levkovich
Kim Loux
Cirel & Howard Magen
Patricia Malley
Anne Marble
Linda & David Marder
Ruth and Stephen Marino
Frances G. Martin
Cary Mazer
Rhonda Dickey
William Diebold
Mary Gillett & James Dimartino
Robert DiSerafino
Gregory DiStefano
Cynthia Dunlap
Neil Durkin
David Finger
David Ingram & Melanye Finister
Dr. Judith Finkel
Amanda Fischer
Juliana Flower
Roger Frantz
Sabrina Galloway
Lawrence Geller
Jacqueline & Larry Goldfinger
Michael Hairston
Tom Harmaty & Barbara Weinstock
Joy Hockman
Michael McCaney Jr.
Lyndsey & Kevin McCormick
Scott Mccreary
Sebastienne Mundheim
Nancy Burd & Mel Nasielski
Judith L. Peakes
David Bushnell & Kimberly Pelkey
Darnelle Radford and Matthew Mastronardi
Don Riggs
Murray Dubin & Libby Rosof
Barbara & Dan Rottenberg
Eric Schaeffer
Ruth Septee
Stephanie Shepard
Beverly Short
Corey & Jonne Smith
Julie & Pete Stern
Bert & Lynne Strieb
Jody Sweitzer

\$100-\$499 contd.

Frank Trommler
Richard Vermeil
Anne & Edward Wagner
Melinda Williams
Bob Weinberg & Eleanor Wilner
Anne J. Wright
Karen Wrigley-Haak
Laura Zierer
Mark Zwanger

\$10-\$99

Anonymous
Kathleen Anderson
Rosemary Auge
Thomas Baker
Harry F. Bambrick
Tara Bankard
Pamela Barnett
Sally & Mo Barron
Leigh Goldenberg & Aaron Bauman
Irene Berkowitz
Tanisha Bezu
Marjorie Bicknell
Walter Bilderback
Denise Cavaliere
Anne Cecil
Karen Chance
Teri & Garth Connor
Anthony and Mary Creamer
Robert Dilullo
Kimiko Doherty
Marsha Z. Dollinger
Jay Donner
Lei-Lynne Doo-Horvick
John Driscoll
Ricki Eisenstein
Sarah Eisenstein
Janet & Nick Embree
Caroline Fernandes
Walter Ferst
Christopher Fox
Christine Fryer
Vincent E. Fumo
Chaim Galfand
In Memory of Michael Gannon
Corissa Gay
Connie Georgov
Stan Gibell
Sybil Gilmar
Bill Goldberg

SUPPORT THEATRE EXILE WITH A TAX-DEDUCTIBLE GIFT THAT WILL DOUBLE YOUR IMPACT!

TO CELEBRATE OUR 27TH SEASON, ALL NEW OR INCREASED GIFTS MADE THIS FISCAL YEAR (THROUGH JUNE 30, 2024) WILL BE MATCHED 1:1 BY OUR WONDERFUL BOARD OF DIRECTORS UP TO \$27,000.

THERE ARE MANY WAYS TO GIVE! **One-time gifts**

Quarterly, monthly or annual recurring gifts • Donations of Stocks and Bonds
Corporate Matching Gifts • Legacy Gifts and planned giving.

You can give by phone 215-218-4022 on our site theatrexile.org or donate now through Venmo



WEBSITE



VENMO

A CASE FOR THE EXISTENCE OF GOD POST-SHOW DISCUSSIONS

Theatre Exile loves to spark discussions. Join us for one of our many post-show discussions. We have discussions after the following performances:

SUNDAY JANUARY 14TH, 3PM

WEDNESDAY JANUARY 17TH, 7PM

THURSDAY JANUARY 18TH, 12PM

The discussions will take place approximately 90 minutes after the listed show times. You don't have to attend a performance to join us for a discussion.

SUPPORTERS

\$10-\$99 contd.

Patricia Goldentyer
Robert Gorchov
Jodi Greenblatt
Louis Greenstein
Nan Gutterman
Mike & Liza Haas
Stephen Harlen
Jean Haskell
Ileen & Tom Henderson
Archibald Hewes
Geoffrey Hindle
David Hodges
Sharon Hoffberg
Pat Hynes
Tracey Jackson
Raf Jamieson
Judy Kastenberg
Bruce Katsiff
Elizabeth Shiller
Erica Sholes
Jennifer Shropshire
Ron Simon
Sarah Singer
Shirley & Cecil Smith
Jessica Snow
Heather Speirs
Margaret Spencer
Diane & Richard Steinbrink
Vanessa Sterling
Sandra Stranz
Shuana Swartz
Dr. Dolores & George Szymanski
Jennifer Tsui
Barry Brait
William Brennan
Barbara Bromfield
Oleg Brovender
Louis Brown
Lynn Brown
Daniel Buchanan
William Burrison
Anthony Camp
Iain Campbell
Jack Cardonick
Mary Carpenter
Jill Kearney
John & Janet Khanlian
Megan Kiesel
Sharon Kling
Corinne Lagermasini
Nancy Lanham

\$10-\$99 contd.

Ruthie Levikoff
Rebecca Levine
Thomas Long
Margaret H. Lonzetta
Diane Rurode & James Lord
Jeremy Lupowitz
Jay Luxion
Therese Madden
Ida B. Malloy
Rosa Malloy
Maureen Mamsi
Marty Maynard
Patrick McCullough
Cynthia Mollen
Laurie Mufson
David Penkower & Namrata Narain
Miriam Nasuti
Veronica Nitka
Marta Nolan-Alley
Erika Owens
Sheri Ozard
Anonymous
Kristan Polsgrove
Carla Puppin
Kenneth Richman
Chandana Claudia Robinson
Sonja & David Robson
Robin Rodriguez
Patricia Rogalski
Karen Rose
Robert Ross
John & Christel Salera
Christine Scarpa
Doug Schaller
Stephen Platt & Robin Schaulfer
Elana Benamy & Ray Scheinfeld
Barbara Shapiro
Lois Shestack
Ubong Udoekwere
Sharon & Paul Waimberg
Kimberly Walker
PJ Walkling
Edward Warchol
Dan Waskow
Jacqueline Weitzner
John Weston
James Wilson
Jane Winkel
Shari Wolinsky-Farmer
Maureen Wootten
Sisi Wright
Ruth Yaskin

YOUNG Exiles

BECOME A YOUNG EXILES MEMBER FOR \$65 AND RECEIVE:

A **Preview level subscription** for Exile's 2023-2024 Subscription Series, a seat in our annual **workshop offerings**, an exclusive **happy hour** on Young Exiles Night, **neighborhood discounts** at Cartesian Brewing and Batter & Crumbs with your membership card, and a **community** of young folks who are invested and engaged in the conversations that are sparked by Theatre Exile's programming.

Young Exiles is open to those 35 and under

CARTESIAN


LOCAL ORIGIN BREWING

Do Vegan
South Philly Style



winner
2022
BEST
VEGAN
COFFEE
SHOP

267.319.8852
1401 Reed Street, South Philly
batterandcrumbs.com

 [instagram.com/batterandcrumbs](https://www.instagram.com/batterandcrumbs)



THEATRE EXILE TEAM

Deborah Block, Producing Artistic Director

Business/Administration

Darnelle Radford, Director of Operations

Randi Alexis Hickey, General Manager

Carolyn Schlecker, Operations Consultant

Artistic

Matt Pfeiffer, Artist in Residence

Education

TS Hawkins, Director of Education

External Relations

Denise Cavaliere, Director of Individual Giving

Anne Marie Cammarato, Grant Writer

En Route Marketing, Tracy Bucholz & Billy Cook

Nikki Hagedorn, Graphic Designer

Community Engagement

Sebastienne Mundheim, Producer and Project Manager, Out of Exile

Building and Venue Maintenance

Shane Walsh, Building Manager

Rosa Mendez & Lidia Méndez Nolasco, Housekeeping

Production

Gabby Goldman, Production Manager

Melody Wong, Season Stage Manager

Natali Merrill, Season Audio Engineer

Blake Hastings, Jasper West, & Casie Weaver, Ella Namou - Season Overhire

Anna Ryabova - Carpenter

John Troy, Darren West, Peter Smith - Electricians

Ben Bass, Paul Sharkey, Miranda Watkins - Overhire

Front of House Staff

Eliza Carson

Patrick Reilly

Liz Gleason

River Von Waldron

Becca Smith

Fall Interns

AJ Maryn

Simona Montalto

Ella Namour

BOARD OF DIRECTORS

Executive Committee

Desiree Salera, Chair
Sterling Johnson, Vice Chair
Francis Murphy, Treasurer
Alison Ezell, Secretary

Board Members

Deborah Block
Robert Dever
Michael Donahue
Patricia Forcina
Brett T. Mapp
Tiffany Naiman
J. Paul Nicholas
Bryna Scott
Dr. Jeffrey Sorkin
Reuben Wade

Exile Advisors & Committee Members

Ken Bingham
Vincent E. Fumo
Anne Gemmell
Tom Harmaty
Liza Herzog
Shirley Lockwood
Brett Ashley Robinson
Gayle Smith
Robyn Savacool

Founders

Joe Canuso and Trish Kelly

SPECIAL THANKS

Kate Coots, Scott Cassidy, Matt Faragasso, Anna Marie Di Dio, Gayle Smith, Doug Smullens, Josh Smullens, Nathan Renner-Johnson and PSW, Reuben Wade, Janice Smith, Drew Billiau & Opera Philadelphia

THANK YOU TO OUR SEASON SPONSOR



Dad's Hat[®]
PENNSYLVANIA RYE WHISKEY



SAVE THE DATE

**MONDAY
5/20/2024**